

AV3000 NX

The Next Generation of Telematics



AV3000 NX is our 5th Generation of Telematics Products, based on 10 years of experience and thousands of units deployed in the field. The AV3000 NX goes far beyond the basic Telematics requirements and provides a truly versatile solution to Fleet Managers with reliable and rugged, easy to install unit and graphical back-end reporting tool.

Rexroth Bosch Group



AV3000 NX communicates with specialty vehicles like salt spreaders and vehicles with Rexroth Compuserve Controllers providing real time data.

AV3000 NX can integrate with Garmin GPS devices to assist dispatch by providing drivers with realtime location maps. Optional two way communication through Garmin touch screen interface is also available.

GARMIN



AV3000 NX Features

- Built-in Interfaces for:
 - CAN, OBDII, J1939 and K-Line
 - Garmin GPS for downloading directions
 - Bosch Rexroth for salt & sand spreading
- Real Time vehicle diagnostics
- Geo-fencing - polygon
- Accurate retrieval of VIN, Odometer and Fuel Usage from Engine Data
- Built-in GPS and Cellular Antenna
- GSM or CDMA Modem
- Option for Dual Mode External Antenna
- High Resolution GPS Receiver
- Tamper Detection
- Covert install - under dash mount
- Over the air upgrade capability
- Stores up to 1 week's data when out of cellular coverage

AV3000 NX

Graphical Reporting Tools

Idling:

Get real time information about your fleet idling statistics. Get insight into your driver's idling habits on a monthly, daily or trip basis. Compare your drivers performance in terms of total Idling and Idling as percentage of engine run time.

Fleet Utilization:

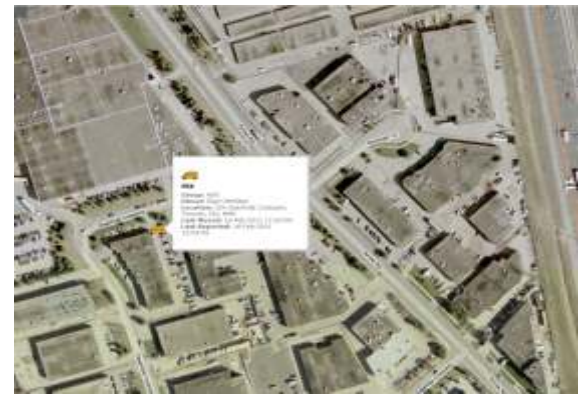
Optimize your Fleet size with real time Fleet Utilization data. See how many vehicles were utilized and at what time. Find out the most utilized vehicles in your Fleet.

After Hours Usage:

Minimize vehicle misuse with detailed after hours fleet usage reports.

Stop & Go:

Get first hand information on driving behaviour. Look at each trip start and end point location and time.



AV3000 NX Specifications

Operating Temperature Range: -20°C to +55°
Storage Temperature: -40°C to +85°C
Input Voltage: 9 to 16 Vdc
Current Draw - operational mode: 150mA
Current Draw - sleep mode: <5mA
Dimensions: 10.5cm x 9.0cm x 3.0cm
(4.1" x 3.5" x 1.2")
Weight: 170 grams (6.0 oz)